

**UPDATED:  
10/16/20**



**RUSD**

**RIVERSIDE UNIFIED  
SCHOOL DISTRICT**



**2020-2021**

**IN-PERSON ATTENDANCE GUID**

*This is a fluid working document that may be adjusted as conditions and/or guidance changes.*

# PREFACE

---

Riverside Unified School District (RUSD) has developed plans that allow students to safely attend school and maximize their learning. This guidebook serves to provide Riverside Unified families with information related to in-person attendance at school facilities for the 2020-2021 school year. It takes into account the Governor's "Resilience Roadmap," the California Department of Public Health (CDPH) guidelines, and the most recent Riverside County health orders. The guidebook will continue to be updated based on any new information from the governing health agencies.



# STAY CONNECTED



OR VISIT:

RIVERSIDEUSD.ORG

# A MESSAGE FROM OUR SUPERINTENDENT

---

October 16, 2020

Dear RUSD Families,

While 2020 has been an incredibly challenging year, I am personally gratified by seeing how much our families and the importance of schooling, even though it may look different this year.

Our In-Person Attendance Guidebook has been developed to provide guidance to our community despite the confusion and changing information we all face daily. Our principals and teachers will utilize the District-approved safety procedures and will be fully informed on how children will attend school in a safe environment that provides equitable access to all and fosters emotional wellbeing.

In addition, students with unique learning needs, IEPs, 504s, and English learners will continue to receive differentiated instruction and a whole will continue efforts to integrate more culturally relevant lessons across all subject matter and grade levels.

Now more than ever, we understand that communication and transparency are key. The Riverside Unified School District will communicate regularly with our families and staff as plans are revised to meet community health conditions and safety protocols and guardians to have current information when making decisions for their children.

Be assured that RUSD will comply with all State and County health regulations. We will be unwavering in our mission to ensure every child is feeling safe and welcome by our educators. Thank you for your support and flexibility as we move forward with the goal of returning schools to in-person attendance.

Sincerely,



**David C. Hansen, Ed.D.**  
**RUSD Superintendent**

A handwritten signature of David C. Hansen in black ink. The signature is stylized and cursive, matching the printed name above it.



# TABLE OF CONTENTS

---

Guiding Principles

Health and Safety Precautions

COVID-19 Protocol and Notification

Considerations for Partial or Total School Closure

Employee Testing

Program Overview

Instructional Schedules

Meal Service

Transportation

Access to Additional Supports and Interventions

Special Education

Social Emotional Supports and Family Resources

Devices and Connectivity

Contact Information

2020-2021 School Calendars



# GUIDING PRINCIPLES

---



## HEALTH & SAFETY PRECAUTIONS

The health and safety of our students, staff, and families is of utmost importance. Our plan to reopen schools is based on guidance from public health officials and state agencies.



## EQUITY

Equity for RUSD is accomplished when every student is provided with what it takes to learn and succeed to fulfill their academic potential.



## COMMUNICATION

We ensure that timely and accurate information is provided to students and families.



## SYSTEMIC PROCESSES

We strive to have structured processes in place for all aspects of schools.

# HEALTH AND SAFETY PRECAUTIONS

While important to address health and safety, we must also place focus on academic instruction and extracurricular performance, encourage connectedness, and address learning loss. When Phase 2 of in-person instruction begins in District (RUSD), school will look much different than previous years. As students return, school will look different than

## CLASSROOM SETUP

- Each teacher will have a rolling plexiglass barrier in their classroom.
- All students will have a plexiglass desk partition.
  - Middle and high school students will wipe down their desk and shield at the start and end of each period.
- Desks will be arranged all facing forward to minimize face-to-face contact.
- Students will not share school or personal items and will be provided supplies such as books, pencils, scissors, and
- Hand sanitizing stations will be provided at various locations on campus.
- Hand sanitizer will be available in each classroom.
- Class sizes will be divided in half, as closely as possible, into A and B groups to limit the number of students on campus.
- Signage and floor markers for social distancing will be displayed and must be followed.
- Use of drinking fountains will be suspended except for the filling of water bottles.

## SCREENINGS

- Students and adults are recommended to self-screen for COVID-19 symptoms such as fever, cough, shortness of breath, loss of taste or smell, congestion, sore throat, runny nose, nausea, or vomiting. Anyone experiencing these symptoms should
- Student temperatures will be checked upon arrival to campus. Anyone with a fever of 100.4 or higher will be sent home.

## ACCESS TO CAMPUS

- Visitors and volunteers on campus will be restricted. This will be revisited as the year progresses and as health conditions change.
- School sites will have signage posted throughout campus to remind students and staff of healthy hygiene practices and proper face coverings.
- School sites will have designated routes for entry and exit, as well as a path of travel.
- Meetings with families and the public will be conducted by telephone or videoconference.

## FACE COVERINGS & PROTECTIVE EQUIPMENT

- Students and staff will use face coverings when:
  - on the bus.
  - waiting to enter school and the office.
  - on school and District property (except when eating or drinking).
  - leaving school.
- Face coverings will be provided to all staff and students.
- Face shields will also be provided to staff with specific job specifications and some students with special needs.
- Students may bring personal face coverings or neck gaiters following the dress code policy.
- Parents must wear facial coverings at all times when on campus.

In order to comply with the California Department of Public Health (CDPH) guidance, schools must exclude students who do not wear a face covering, are not exempt from wearing a face covering under CDPH guidelines and refuse to wear one provided by the school. Schools will make every effort to provide a face covering to students who inadvertently fail to bring a face covering to school to prevent unnecessary exclusions.



## FACE COVERING EXEMPTIONS:

- Persons with a medical condition, mental health condition, or disability that prevents wearing a face covering or with a medical condition for whom wearing a face covering could obstruct breathing or are unconscious, incapacitated, or unable to remove a face covering without assistance.
- Persons who are hearing-impaired or communicating with a person who is hearing-impaired, where the ability to hear or communicate, or the nature of the communication, are exempt.
- Persons for whom wearing a face covering would create a risk to the person related to their work, as determined by health care regulators or workplace safety guidelines, are exempt.

## HYGIENE PRACTICES

### ***Follow Five Steps to Wash Your Hands the Right Way***

Washing your hands is easy, and it's one of the most effective ways to prevent the spread of germs. Clean hands can prevent the spread of germs from one person to another and throughout an entire community—from your home and workplace to childcare facilities.

***Follow these five steps every time.***



**1**

***Wet your hands with clean, running water (warm or cold), turn off the tap, and apply soap.***



**2**

***Lather your hands by rubbing them together with the soap. Lather the backs of your hands, between your fingers, and under your nails.***



**3**

***Scrub your hands for at least 20 seconds. Need a timer? Hum the “Happy Birthday” song from beginning to end twice.***



**4**

***Rinse your hands well under clean, running water.***

## ON CAMPUS AND IN THE CLASSROOM

Social distancing will limit the spread of COVID-19. Schools will adhere to the following strategies to maintain social distancing:

- Movement of students and teachers or staff will be minimized as much as practicable.
- Elementary students will attend recess with their group of students, will avoid touching others and maximize distance.
- Secondary schools will follow a block schedule to minimize daily transitions.
- During in-person instruction, space between desks will be maximized and markings on classroom floors will be used to maintain distance.
- Social distancing will be used to the extent practicable in locations where students assemble, including lunch and assemblies.
- Grab N' Go Meals will be prepared in a pre-packaged style. Special dietary needs will be considered when planning.
- Classrooms and offices will be cleaned daily.
- High-touch surfaces will be cleaned regularly.



# COVID-19 PROTOCOL AND NOTIFICATION

RUSD will follow the California Department of Public Health ([CDPH](#)) guidelines.

STUDENT OR STAFF WITH:	ACTION:
1. COVID-19 symptoms (e.g. fever, cough, loss of taste or smell, difficulty breathing)	<ul style="list-style-type: none"><li>• Send home</li><li>• Recommend testing (<i>if positive, see #3, if negative, see #4</i>)</li><li>• School/classroom remains open</li><li>• <b>No school community notification</b></li></ul>
2. Close contact with a confirmed COVID-19 case	<ul style="list-style-type: none"><li>• Send home</li><li>• Quarantine for 14 days from last exposure</li><li>• Recommend testing (<i>but will not shorten 14-day quarantine</i>)</li><li>• School/classroom remains open</li><li>• <b>Consider school community notification of a known contact</b></li></ul>
3. Confirmed COVID-19 case infection	<ul style="list-style-type: none"><li>• Notify Riverside County Public Health. Isolate the case and exclude from school. Identify contacts (†), quarantine and exclude from school (††) for 14 days after the last date the case was present (or symptom onset or test date, whichever is later).</li><li>• Recommend testing of contacts and prioritize symptomatic contacts for testing.</li><li>• Disinfection and cleaning of classroom and primary spaces where case spent significant time</li><li>• School remains open</li><li>• <b>School community notification of a known case</b></li></ul>
4. Tests negative after symptoms	<ul style="list-style-type: none"><li>• May return to school three (3) days after symptoms resolve</li><li>• School/classroom remains open</li></ul>

(†) A contact is defined as a person who is <6 feet from a case for >15 minutes. In some school situations, it may be difficult to determine if a person has met this criterion and an entire cohort, classroom, or other group may need to be considered exposed, particularly if people have been in the same space.

(††) A cohort is a stable group with fixed membership that stays together for all courses and activities (e.g., lunch, recess, etc.) and is not mixed with other persons or cohorts.

# CONSIDERATIONS FOR PARTIAL OR TOTAL SCHOOL

Once schools return to in-person instruction, schools are not required to close again if the County sees an increase in percentages. However, individual school closure is recommended based on the number of cases, the percentage of students who are positive for COVID-19, and following consultation with the local health department.

Individual school closure may occur when there are multiple cases in multiple groups (A/B) at a school or when at least 25% of teachers/students/staff are cased within a 14 day period. A superintendent may close a school district if 25% or more of the district is closed due to COVID-19 within 14 days, and in consultation with the local public health department.





# EMPLOYEE TESTING

- Once schools are providing in-person instruction, it is required that screening and testing be implemented based on the local disease trends.
- RUSD has arranged for testing for school site staff as per the California Department of Public Health ([CDPH](#)) guidelines.
- School staff includes teachers, paraprofessionals, cafeteria workers, custodians or any other school employee that may have contact with students or other staff.



# PROGRAM OVERVIEW



## IN-PERSON PROGRAM PHASE 2 AND 3



RUSD is proud to offer program choices for our families. This guide is specific to in-person attendance during Phase 2 and 3 of the Instructional Model.

**Phase 2:** During Phase 2, students will return to campus for in-person instruction one day per week. Students will physically come to school on different days of the week in order to increase social distancing. Students placed in Group A will physically come to school on campus on Tuesdays and participate in distance learning on Monday, Wednesday, Thursday, and Friday. Students placed in Group B will physically come to school on campus on Thursdays and participate in distance learning on Mondays, Tuesdays, Wednesday, and Friday.

**Phase 3:** Students will physically come to school during regular school hours two days per week. Students in Group A will physically come to school on campus on Mondays and Tuesdays. Students in Group B will physically come to school on campus on Thursdays and Fridays. If students do not come to school on campus, they will participate in distance learning instruction during typical school hours.

Students who participate in **special day classes** will return during Phase 2 and 3, with a different schedule than general education students.

Returning to in-person attendance has not yet been determined for **preschool students**. Parents of preschoolers will be notified when attendance will resume.

# INSTRUCTIONAL SCHEDULES

---

Instructional schedules are being finalized for in-person attendance. Please be on the lookout for a separate communication specific to instructional schedules.

We thank you for your continued support and dedication to education in RUSD.



# MEAL SERVICE

During the school year, Nutrition Services will continue to provide meals to all students in all programs. Families are required to complete the Meal Program using the RUSD Funding Form. To apply, please visit [riversideunified.org/departments/nutritionservices](https://riversideunified.org/departments/nutritionservices) (951)352-6740.

ELEMENTARY	SECONDARY
<p><b>Elementary Site On Campus:</b> Grab N'Go Meals will be prepared in a pre-packaged style.</p> <p><b>Breakfast:</b> Breakfast will be sent home with each student at the end of each day of in-person attendance for students to consume at home.</p> <p><b>Lunch:</b> Lunch will be served from the cafeteria.</p> <p>Students will dine with their assigned student groups, in areas designated by each school site, maintaining social distancing.</p> <p>As students exit campus, Grab N' Go Meals for the next day(s) will be provided to each student for day(s) the student is not in-person.</p>	<p><b>Secondary Site On Campus:</b> Grab N' Go Meals will be prepared in a pre-packaged style.</p> <p><b>Breakfast:</b> Breakfast will be sent home with each student at the end of each day of in-person attendance for students to consume at home.</p> <p><b>Lunch:</b> Lunch will be served utilizing multiple serving lines.</p> <p>Students will dine with their assigned student groups, in areas designated by each school site, maintaining social distancing.</p> <p>As students exit campus, Grab N' Go Meals for the next day(s) will be provided to each student for the day(s) the student is not in-person.</p>
<p><b>Elementary Site Off Campus:</b> Grab N' Go Meal service for students off campus will be available at all RUSD locations, except EOC and STEM Academy, on Tuesdays and Thursdays from 11:15am - 12:45pm.</p>	<p><b>Secondary Site Off Campus:</b> Grab N' Go Meal service for students off campus will be available at all RUSD locations, except EOC and STEM Academy, on Tuesdays and Thursdays from 11:15am - 12:45pm.</p>



# TRANSPORTATION

Transportation services will continue to be offered for students during in-person attendance. We are dedicated to the community of Riverside. If you have any questions regarding transportation, please contact the Department of Transportation ext. 83019.

- A daily cleaning regiment has been implemented in all busses to disinfect with a heightened awareness to all high school guidelines.
- Only one bus will be in the loading/unloading zone at any one time.
- All students and the driver will be required to wear face coverings during the entire bus ride.
- To maximize social distancing, students will load the bus from the back to the front, sitting in seats with identification.
- Unloading will be from front to back to minimize students crossing paths and close contact with other students.
- Windows will be open as much as feasible to increase air circulation within the bus.



# ACCESS TO ADDITIONAL SUPPORTS AND INTERVENTIONS

## TUTORING

Paper Tutoring, a new tutoring service, will be available to all students Grades 5-12 for FREE. Paper allows students to get help 24/7 and is available in any subject in both English and Spanish. Paper can also help with essay writing support by providing feedback on how to improve grammar, content, and structure within 24 hours of submission. Please look for further information on the implementation of this tutoring service. We anticipate this launch to take place at the end of October.



### FREE ONLINE TUTORING

- Starting October 19th
- Chat with tutors 24/7
- Unlimited Sessions
- Any academic subjects
- Essay review

[CLICK HERE FOR DETAILS](#)



# HEARTS AND PRIMETime

Virtual tutoring is available from RUSD's Expanded Learning staff through the HEARTS (grades TK-6) and PRIMETime person students attending the listed schools and virtual program students from the following home schools:

## ELEMENTARY SCHOOLS

Adams Elementary	Highgrove Elementary	Magnolia Elementary
Alcott Elementary	Highland Elementary	Monroe Elementary
Beatty Elementary	Jackson Elementary	Mt. View Elementary
Bryant Elementary	Jefferson Elementary	Pachappa Elementary
Emerson Elementary	Liberty Elementary	Victoria Elementary
Fremont Elementary	Longfellow Elementary	Washington Elementary
Hawthorne Elementary	Madison Elementary	

## MIDDLE SCHOOLS

Central Middle	Earhart Middle	Sierra Middle
Chemawa Middle	Gage Middle	University Heights Middle

Students may take part in live, drop-in class/homework support, small-group tutoring sessions, and academic enrichment hours of 3:00 pm and 6:00 pm Monday through Friday. Spanish-speaking tutors are available to support English Learner Immersion Program. To register, use the provided link: [HEARTS-PRIMETime Registration Form](#) For more information contact the Expanded Learning Teacher on Special Assignment, at [amueting@riversideunified.org](mailto:amueting@riversideunified.org) or (951) 788-7135 ext. 56112.

### ***Tutoring for Dual Language Immersion students***

RUSD's Poly High School students are providing tutoring for elementary students in the Dual Language Immersion Program. Please contact your school site's principal if you are interested.

# SPECIAL EDUCATION

Special education, related services, and any other services required by a student's Individualized Education Plan (IEP) will be offered to the extent practicable.

IEP meetings will be convened virtually for students in all instructional programs. This means parents and other members of the IEP team will have an opportunity to participate through a platform such as Google Meets or by telephone.

Special Education evaluations will be conducted virtually or in-person following health and safety precautions and guidance issued by the State and local health authorities.

Students who receive pull-out services such as speech and language or RSP, or who mainstream into another classroom for a portion of their day, will remain in their classroom and participate in the session virtually using a platform such as Google Meet while wearing headphones with a microphone.

Specialized IEP related services provided by outside agencies, such as a private duty nurse, will continue to be provided following health and safety guidelines.



# SOCIAL EMOTIONAL SUPPORTS AND FAMILY P

The District is committed to reengaging and reconnecting with students and supporting their social and emotional learning (SEL) is critical as students and staff adjust to hybrid learning and students encounter significant challenges in their academic lives. SEL lessons will continue to be delivered by teachers and support staff.

Student Assistance Program (SAP) Counselors are assigned to every school throughout the District. SAP Counselors provide individual counseling, social skills development, and classroom lessons. For information related to SAP at each school, contact Katarina Roy Schanz, Director of Wellness and Engagement, at [kroyschanz@riversideunified.org](mailto:kroyschanz@riversideunified.org) or (951) 352-1234. [Solace](#) a local partner organization, connects families and staff with mental healthcare resources and providers in our community.

Please visit the [RUSD Virtual Wellness Center](#) to discover ways to enhance your overall well-being.

## FAMILY RESOURCE CENTER

The RUSD Family Resource Center's mission is to improve student learning and development, strengthen family programs by integrating resources and services from the community. Family Resource Center services promote student success and foster opportunities for family and community engagement through:

- Connections to district supports including health services, counseling, early childhood programs, homeless and foster care prevention, and adult education.
- Linkages to community resources and referrals for food, clothing, shelter, health services, childcare, crisis assistance, and legal services.
- Family webinars and virtual workshops that provide practical tools to support distance learning, student wellness, and leadership development.

To connect with the RUSD Family Resource Center, call (951) 328-4003 and leave a detailed message. Visit the RUSD website and follow on [Facebook](#) to learn more.

# DEVICES AND CONNECTIVITY

Students may be asked to bring devices to and from school to facilitate individualized support. If your child is in need of a device or hotspot for internet connectivity, please call the RUSD Tech Support Hotline and someone will assist you. For the safety and security of our students, all devices (Chromebooks) checked out from RUSD are equipped with a content filter.

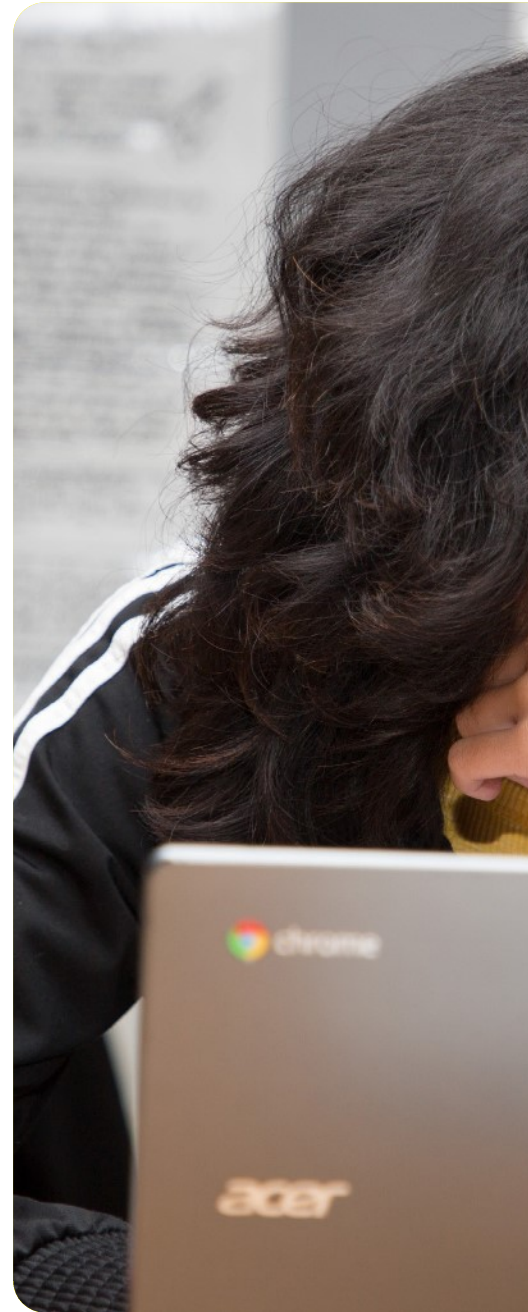
You may qualify for affordable internet if your student qualifies for the school meal program, also known as the National School Lunch Program. For information on internet providers, please visit [www.everyoneon.org/cetf](http://www.everyoneon.org/cetf).

If your child is in need of technical assistance, please use the following contact methods and someone will assist you as soon as possible.

RUSD Tech Support Hotline: (951) 208-7185

RUSD Tech Support Email: [support@riversideunified.org](mailto:support@riversideunified.org)

**CLICK HERE FOR  
TECH SUPPORT**





# CONTACT INFORMATION

PROGRAM	CONTACT PHONE NUMBER
Family Resource Center	(951) 328-4003
Home Based Program	(951) 276-7670
In-person Program	Contact your assigned school site
Nutrition Services	(951) 352-6740
Special Education	(951) 352-1200 ext. 8350
Student Assistance Program	(951) 352-1200 ext. 8330
Tech Support	(951) 208-7185
Transportation	(951) 788-7135 ext. 8301
Virtual Program	Contact your assigned school site

# 2020-2021 SCHOOL CALENDARS

## RIVERSIDE UNIFIED SCHOOL DISTRICT Standard School Calendar 2020-2021

<b>S M T W T F S</b> <b>JULY</b> 1 2 3 4 5 6 7 8 9 10 11 12 13 14 15 16 17 18 19 20 21 22 23 24 25 26 27 28 29 30 31	<b>S M T W T F S</b> <b>AUGUST</b> 2 3 4 5 6 7 8 9 10 11 12 13 14 15 16 17 18 19 20 21 22 23 24 25 26 27 28 29 30 31	<b>S M T W T F S</b> <b>SEPTEMBER</b> 1 2 3 4 5 6 7 8 9 10 11 12 13 14 15 16 17 18 19 20 21 22 23 24 25 26 27 28 29 30	<b>S M T W T F S</b> <b>OCTOBER</b> 1 2 3 4 5 6 7 8 9 10 11 12 13 14 15 16 17 18 19 20 21 22 23 24 25 26 27 28 29 30 31
<b>S M T W T F S</b> <b>NOVEMBER</b> 1 2 3 4 5 6 7 8 9 10 11 12 13 14 15 16 17 18 19 20 21 22 23 24 25 26 27 28 29 30	<b>S M T W T F S</b> <b>DECEMBER</b> 1 2 3 4 5 6 7 8 9 10 11 12 13 14 15 16 17 18 19 20 21 22 23 24 25 26 27 28 29 30 31	<b>S M T W T F S</b> <b>JANUARY</b> 1 2 3 4 5 6 7 8 9 10 11 12 13 14 15 16 17 18 19 20 21 22 23 24 25 26 27 28 29 30 31	<b>S M T W T F S</b> <b>FEBRUARY</b> 1 2 3 4 5 6 7 8 9 10 11 12 13 14 15 16 17 18 19 20 21 22 23 24 25 26 27 28
<b>S M T W T F S</b> <b>MARCH</b> 1 2 3 4 5 6 7 8 9 10 11 12 13 14 15 16 17 18 19 20 21 22 23 24 25 26 27 28 29 30 31	<b>S M T W T F S</b> <b>APRIL</b> 1 2 3 4 5 6 7 8 9 10 11 12 13 14 15 16 17 18 19 20 21 22 23 24 25 26 27 28 29 30	<b>S M T W T F S</b> <b>MAY</b> 1 2 3 4 5 6 7 8 9 10 11 12 13 14 15 16 17 18 19 20 21 22 23 24 25 26 27 28 29 30 31	<b>S M T W T F S</b> <b>JUNE</b> 1 2 3 4 5 6 7 8 9 10 11 12 13 14 15 16 17 18 19 20 21 22 23 24 25 26 27 28 29 30

### LEGAL & LOCAL HOLIDAYS

<b>JUL</b>	3	- Independence Day Observed
<b>SEP</b>	7	- Labor Day
<b>NOV</b>	11	- Veterans' Day
	26	- Thanksgiving Day
	27	- All Facilities Closed
<b>DEC</b>	24	- All Facilities Closed
	25	- Christmas Holiday Observed
	31	- (In Lieu of Admissions Day)
<b>JAN</b>	1	- New Year's Holiday Observed
<b>JAN</b>	18	- Martin Luther King's Day
<b>FEB</b>	12	- Lincoln's Day
	15	- Presidents' Day
<b>MAY</b>	31	- Memorial Day

November 23 - 27 All Facilities Closed  
December 21 - 25 All Facilities Closed

Board Approved 9/3/19  
\*Board Approved 12/17/19  
\*Holiday Noted: December 31

### IMPORTANT DATES

<b>AUG</b>	5	- New Employee Welcome
<b>AUG</b>	6-7	- All Teachers on Duty
<b>AUG</b>	7	- First Day for 7th Grade
<b>AUG</b>	10	- Classes Begin
<b>OCT</b>	9	- End of First MS/HS Quarter (MS Not in Session)
<b>OCT</b>	30	- Elementary Minimum Day
<b>NOV</b>	5-6	- Parent/Teacher Conferences (Elementary Not in Session)
<b>NOV</b>	6	- End of First Trimester (Elementary sites only)
<b>NOV</b>	23-27	- Thanksgiving Recess
<b>DEC</b>	18	- End of First MS/HS Semester (MS/HS Not in Session)
<b>DEC</b>	21 thru Jan 1	- Winter Recess
<b>JAN</b>	4	- Classes Resume
<b>FEB</b>	19	- Elementary Minimum Day
<b>FEB</b>	26	- End of Second Trimester (Elementary sites only)
<b>MAR</b>	12	- End of Third MS/HS Quarter (MS Not in Session)
<b>MAR</b>	22-26	- Spring Recess
<b>MAR</b>	29	- Classes Resume
<b>MAY</b>	14	- Elementary Minimum Day
<b>MAY</b>	25	- End of High School & 7th Grade
<b>MAY</b>	26	- End of Elem & 8th Grade
<b>MAY</b>	26	- Last Day for Elem/MS/HS Teachers



## DISTRITO ESCOLAR UNIFICADO Calendario Escolar Co 2020-2021

<b>D L M M J V S</b> <b>JULIO</b> 1 2 3 4 5 6 7 8 9 10 11 12 13 14 15 16 17 18 19 20 21 22 23 24 25 26 27 28 29 30 31	<b>D L M M J V S</b> <b>AGOSTO</b> 2 3 4 5 6 7 8 9 10 11 12 13 14 15 16 17 18 19 20 21 22 23 24 25 26 27 28 29 30 31	<b>D L M M J V S</b> <b>SEPTIEMBRE</b> 1 2 3 4 5 6 7 8 9 10 11 12 13 14 15 16 17 18 19 20 21 22 23 24 25 26 27 28 29 30
<b>D L M M J V S</b> <b>NOVIEMBRE</b> 1 2 3 4 5 6 7 8 9 10 11 12 13 14 15 16 17 18 19 20 21 22 23 24 25 26 27 28 29 30	<b>D L M M J V S</b> <b>DICIEMBRE</b> 1 2 3 4 5 6 7 8 9 10 11 12 13 14 15 16 17 18 19 20 21 22 23 24 25 26 27 28 29 30 31	<b>D L M M J V S</b> <b>JANUARI</b> 1 2 3 4 5 6 7 8 9 10 11 12 13 14 15 16 17 18 19 20 21 22 23 24 25 26 27 28 29 30 31
<b>D L M M J V S</b> <b>MARZO</b> 1 2 3 4 5 6 7 8 9 10 11 12 13 14 15 16 17 18 19 20 21 22 23 24 25 26 27 28 29 30 31	<b>D L M M J V S</b> <b>ABRIL</b> 1 2 3 4 5 6 7 8 9 10 11 12 13 14 15 16 17 18 19 20 21 22 23 24 25 26 27 28 29 30	<b>D L M M J V S</b> <b>MAYO</b> 1 2 3 4 5 6 7 8 9 10 11 12 13 14 15 16 17 18 19 20 21 22 23 24 25 26 27 28 29 30 31

### DÍAS FESTIVOS LEGALES Y LOCALES

<b>JUL</b>	3	- Día de la independencia	<b>AGO</b>	5	
<b>SEP</b>	7	- Día del trabajo	<b>AGO</b>	6-7	
<b>NOV</b>	11	- Día de los veteranos	<b>AGO</b>	7	
	26	- Día de acción de gracias	<b>AGO</b>	10	
	27	- Todas las instalaciones están cerradas	<b>OCT</b>	9	
<b>DIC</b>	24	- Todas las instalaciones están cerradas	<b>OCT</b>	30	
	25	- Observación de las fiestas navideñas	<b>NOV</b>	5-6	
	31	- (En lugar del día de admisión)	<b>NOV</b>	6	
<b>ENE</b>	1	- Observación de Año nuevo	<b>NOV</b>	23-27	
	18	- Día de Martín Luther King	<b>DIC</b>	18	
<b>FEB</b>	12	- Día de Lincoln			
	15	- Día de los Presidentes			
<b>MAY</b>	31	- Día de conmemoración de los caídos en batalla	<b>DIC</b>	21 thru	
			<b>ENE</b>	4	
			<b>FEB</b>	19	
			<b>FEB</b>	26	
			<b>MAR</b>	12	
			<b>MAR</b>	22-26	
			<b>MAR</b>	29	
			<b>MAY</b>	14	
			<b>MAY</b>	25	
			<b>MAY</b>	26	
			<b>MAY</b>	26	

23 - 27 de noviembre todas las instalaciones están cerradas  
21 - 25 de diciembre todas las instalaciones están cerradas

Aprobado por la junta de Educación el 3 de septiembre de 2019  
\*Aprobado por la junta de Educación el 17 de diciembre de 2019  
Día festivo indicado: 31 de diciembre  
El calendario también está disponible en inglés